



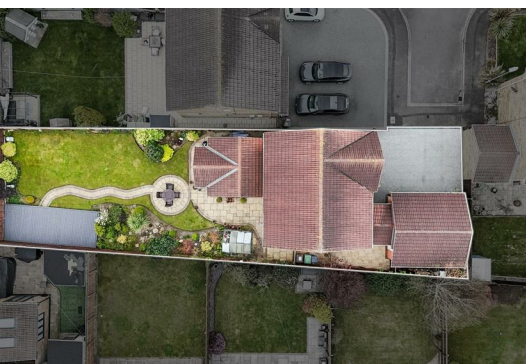
23 Harvester Close

, Hartlepool, TS25 1GD

£350,000



Igomove take pleasure in presenting to the market this greatly extended four bedroom detached residence located in Seaton Carew, impeccably presented, it provides many desirable key attributes which include; four double bedrooms (master and bedrooms two and three all with ensuite facilities) modern family bathroom, good size lounge, study, guest cloakroom, utility room, open plan kitchen diner, garden room extension, double garage, large three vehicle driveway, superb South facing rear garden, UPVC double glazing, gas central heating, beautiful decor throughout, fitted blinds, plantation shutters, freehold.



Attractive frontage, excellent corner plot, extensive resin three car driveway to double garage, entrance door into;

Entrance hallway with the stairs to the first floor accommodation, laminate flooring, pristine decor.

Fitted storage cupboard.

Guest cloakroom comprising concealed cistern WC and wall mounted vanity wash basin, beautiful tiling.

Study located to the front of the property, neutral decor, laminate flooring.

Excellent lounge with bay window to the front of the property and feature fireplace with chrome inset electric fire, delightful decor, decorative coving, laminate flooring, double doors which lead into;

Open plan kitchen dining room fitted with a range of two tone high gloss larder, display, wall, base, and drawer cabinetry, complimentary surfaces, integrated oven, integrated microwave, integrated induction hob, integrated extractor, integrated dishwasher, wine rack, inset sink with American style jet swivel mixer tap, space for American fridge freezer, ample space to dine, recessed spotlights, tiled floor, double doors leading into;

Garden room extension situated to the rear with French doors which open to the rear garden and with vaulted ceiling, recessed spotlights, plantation shutters, fitted storage cupboard, media wall with contemporary fireplace, laminate floor, stylish decor.

Useful utility room with space for tumble dryer and plumbing for washing machine, space to perform laundry duties with fitted cabinetry and work surfaces, tiled backsplash, exterior Georgian glazed door, tiled floor.

To the first floor landing, there is a fitted storage cupboard.

Master double bedroom located to the front of the property with extensive fitted wardrobes and cabinetry, lovely decor, laminate flooring and benefiting from;

Ensuite shower room comprising quadrant shower closure, concealed cistern WC and vanity wash basin combination unit with illuminated mirror with blue tooth speaker, heated towel radiator, complimentary tiling.

Bedroom two is a double located to the front with contemporary decor and it enjoys Jack and Jill ensuite facilities which comprise;

WC, shower enclosure and pedestal wash basin, complimentary tiling.

Bedroom three is another double situated to the rear with modern decor and which also shares the Jack and Jill ensuite facilities with bedroom two.

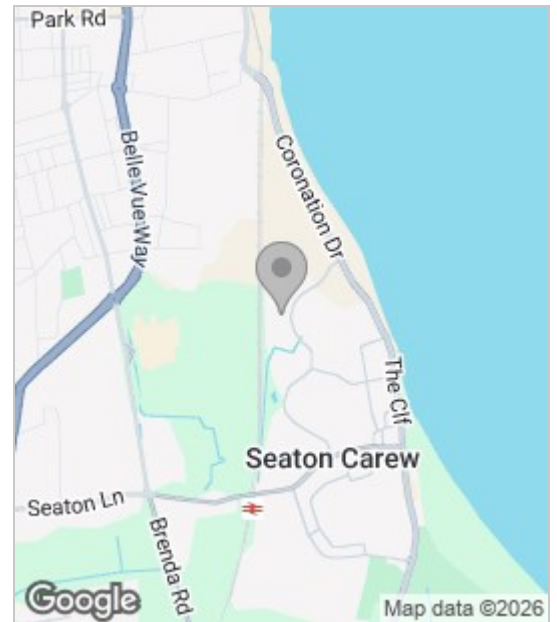
Bedroom four is a further double room with rear elevation window, excellent decor, fitted wardrobes.

The family bathroom comprises bath, close coupled WC and pedestal wash basin with complimentary mosaic tiling.

To the rear is a South facing garden beautifully landscaped and laid to lawn with greenhouse, established shrubbery, decking, and patio areas.

This stunning property is located in a desirable area close to the beach and all the amenities Seaton Carew has to offer, Igomove encourage early viewing to secure this fabulous abode.

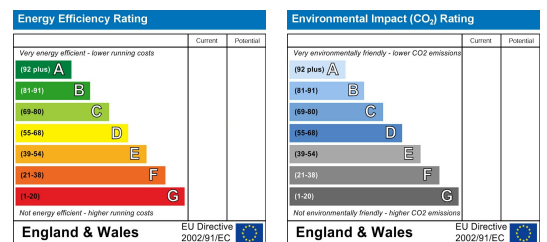
Area Map



Floor Plan



Energy Efficiency Graph



These particulars, whilst believed to be accurate are set out as a general outline only for guidance and do not constitute any part of an offer or contract. Intending purchasers should not rely on them as statements of representation of fact, but must satisfy themselves by inspection or otherwise as to their accuracy. No person in this firm's employment has the authority to make or give any representation or warranty in respect of the property.